

# Scale Song

*This exercise with start taking you up the neck.  
Watch for the high A at fret 5 and the high E at  
fret 12.*

**Moderately**

Exercise

G A B C D E D G A B C D D G A B C D E D

7 C B A A G G E G E A E A G E G E A <sup>E</sup> G E G E

High A at fret 5  
o the E string.

High E at  
fret 12 on  
the E string.

14 A E A G E D C D G A B C D E D G A B C

20 D D G A B C D E D C B A A G

# The Ash Grove

**Allegretto**

Trad.

G C E G E C C D F E D C B G G

5 C E D C B A F A G C B C **Fine**

Low F is  
string 4 fret 3.

**Fine** means  
finish here.

9 E F G E F G G F E F D E F F E D

14 E C D E E D C D G F# G **D.C. al Fine**

This is an  
**F sharp**. It  
is on the E  
string at fret 2.

Go back to the start  
and play to **Fine**.

# Let It Be

Moderately

The Beatles

G G G G A E G G C D E E E D D C C



Low E on string 4 at fret 2.

This is a tie. Let the note ring. Don't play it.

E E F E E D E D D C C



E D C E G A G E C A G E



High A on string 1, fret 5.

E E F E E D E D D C



# Day-O (Banana Boat Song)

Relaxed

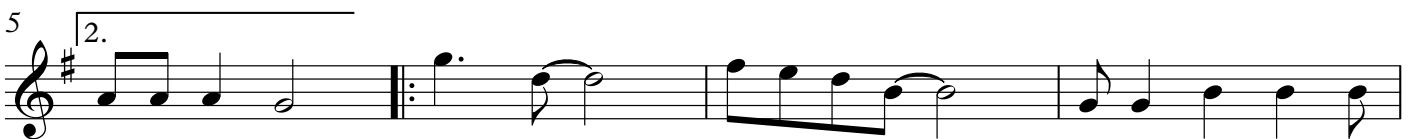
Trad. Jamaican

1 B D D B B D C C C A F# D G G B B B A A A B D



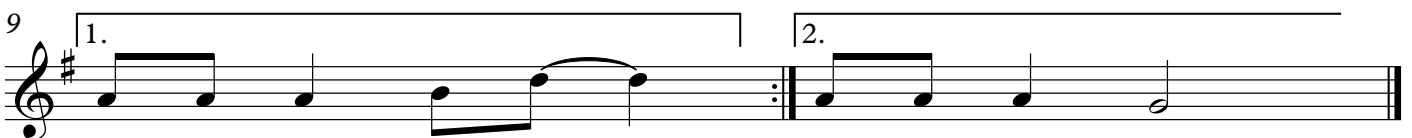
Low F# is string 4, fret 4.

5 A A A G G D F# E D B G G B B B



High F# on String 1, fret 2.

9 A A A B D A A A G



# 'Pirates of the Caribbean' Theme

**Quickly**

A C D D D E F F F G E E D C C D A C

5 D D D E F F F G E E D C D A C

Swap to 3rd position.  
Play the G with the index finger,  
A with the ring finger and B flat  
with the little finger.

9 D D D F G G G A B $\flat$  B $\flat$  A G A<sub>3</sub> D D E

B flat is at fret 6 on  
the 'E' string.

Again, move to  
3rd position.

13 F F G A D D F E E C $\sharp$  D

C sharp is at  
fret 2 on the  
'B' string.

## Andante

**Andante**

Carulli

A B C D E E F F E E D C B A B B D D C C A B C D E E F F

**Fine**

The natural sign cancels  
the sharp from the  
previous bar.

21 E E F E D C G F E D C B A G $\sharp$  A D $\sharp$  E D $\sharp$  E B B D D C C D $\sharp$  E D $\sharp$  E

G sharp is at  
fret 1 on the  
'G' string.

D sharp is fret 4  
on the 'B' string.

**D.C. al Fine**

27 F E D C C B D $\sharp$  E D $\sharp$  E B B D D C C D $\sharp$  E D $\sharp$  E F E D C B

# La Cucaracha

Lively

Trad. Mexican

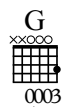
Musical score for "La Cucaracha" in 4/4 time. The score consists of four staves of music. Above the notes, guitar chords are indicated: G, G, C, C, E, E, G, E, G, A, G, F, E, D, F, D, G, G, B, B, D, D, F, D, G, A, G, F, E, D, E, C, C, G, G, G, C, E, G, G, G, C, E, C, C, B, B, A, A, G, G, G, B, D, G, G, G, B, D, G, A, G, F, E, D, C.

# Can Can

Very Quick

Offenbach

Musical score for "Can Can" in 4/4 time. The score consists of four staves of music. Above the notes, guitar chords are indicated: G, G, A, C, B, A, D, D, D, E, B, C, A, A, A, C, B, A, G, G, F#, E, D, C, B, A, G, G, A, C, B, A, D, D, D, E, B, C, A, A, A, C, B, A, G, D, A, B, G.



Strum down from string 4 with the thumb.

# El Coqui

(The Tree Frog)

Lively

Trad. Latin-American


G B D D D E F#E D B D D D A B C B A D



8 G B D D D E F#E D B D D D E D C B A G D



16 F# D G G F# E F# G D F# D G D D E F# G




# The Cossacks

(Russian Song)

Very Quick

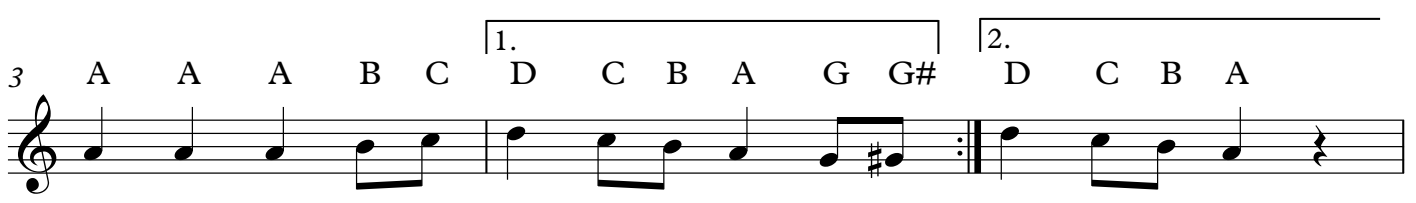
Cracknell

G G# A A A B C D C B A G G#

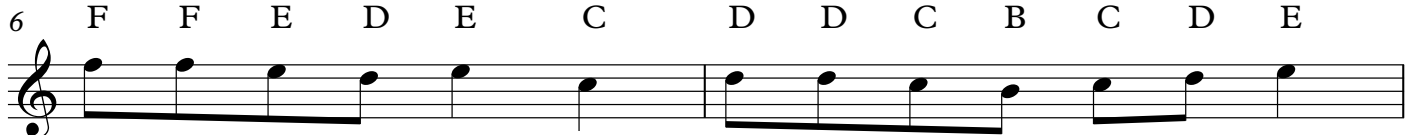


G sharp is string 3, fret 1


3 A A A B C <sup>1.</sup> D C B A G G# <sup>2.</sup> D C B A



6 F F E D E C D D C B C D E



8 F F E D E C <sup>1.</sup> D D C B A <sup>2.</sup> D D C B A



# Jarabe Tapatio

(Mariachi Song)

Trad. Latin-American

G F# G E D# E C B C G E F

D sharp is string 2, fret 4.

G A B C D E F D F E

F E C# D B Bb B G G F#

C sharp is string 2, fret 2. B flat is string 3, fret 3.

G A G F E D E C G F# C

High A is string 1, fret 5.

# Yesterday

Lennon and McCartney

A G G                    B C# <sup>D#</sup> E F#G F#E E                    E E D C B A

C B B                    A G B A E G B B

The lower E  
is on string 4,  
fret 2.

B B                    E F# G F# E F# E D E B

B B                    E F# G F#E F# E D F# G D C B A G G

<sup>D#</sup>  
B C# E F#G F#E E                    E E D C B A C B B A

G B A E G B B                    G B A E G B B